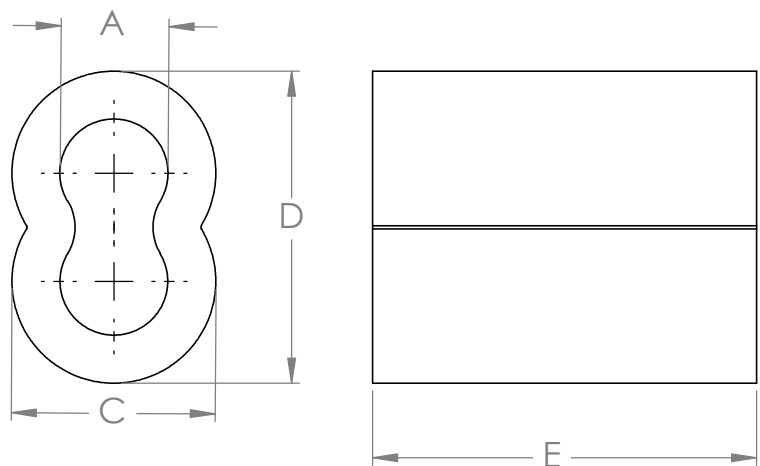


| REVISIONS | | | | |
|-----------|------|-------------------------|----------|----------|
| ZONE | REV. | DESCRIPTION | DATE | APPROVED |
| | B | Ref. for catalog | 4/11/19 | DEP |
| | C | Removed Tolerance Chart | 9/4/2019 | DEP |

B

B



| Cableware P/N | Wire Size | A (Ref.) | C (Ref.) | D (Ref.) | E (Ref.) |
|---------------|-----------|----------|----------|----------|----------|
| SL1-1.5 | 3/64 | 0.073 | 0.140 | .207 | 3/8 |
| SL1-2 | 1/16 | 0.092 | 0.176 | .257 | 3/8 |
| SL1-3 | 3/32 | 0.121 | 0.248 | .381 | 1/2 |
| SL1-4 | 1/8 | 0.161 | 0.334 | .490 | 5/8 |
| SL1-5 | 5/32 | 0.192 | 0.365 | .552 | 11/16 |
| SL1-6 | 3/16 | 0.223 | 0.427 | .646 | 1 |
| SL1-7 | 7/32 | 0.255 | 0.490 | .740 | 1-1/16 |
| SL1-8 | 1/4 | 0.286 | 0.551 | .832 | 1-1/8 |
| SL1-9 | 9/32 | 0.317 | 0.568 | .881 | 1-3/16 |
| SL1-10 | 5/16 | 0.380 | 0.677 | 1.021 | 1-1/4 |
| SL1-12 | 3/8 | 0.442 | 0.756 | 1.162 | 1-7/16 |
| SL1-14 | 7/16 | 0.505 | 0.943 | 1.443 | 1-11/16 |
| SL1-16 | 1/2 | 0.567 | 1.068 | 1.631 | 2 |

A

A

PROPRIETARY AND CONFIDENTIAL
 THE INFORMATION CONTAINED IN THIS DRAWING IS THE SOLE PROPERTY OF LOOS & CO. INC. ANY REPRODUCTION IN PART OR AS A WHOLE WITHOUT THE WRITTEN PERMISSION OF LOOS & CO. INC. IS PROHIBITED.

MATERIAL
6063 Alum. Alloy
 FINISH

| | NAME | DATE |
|-----------|------|---------|
| DRAWN | YD | 4/11/19 |
| CHECKED | BG | 4/11/19 |
| ENG APPR. | DEP | 4/11/19 |

COMMENTS:
 DO NOT SCALE DRAWING

TITLE: Commercial Aluminum Oval Sleeves

| | | |
|----------|--------------------|----------|
| SIZE | DWG. NO. | REV |
| A | SL1-CATALOG | C |

SCALE: 1:1