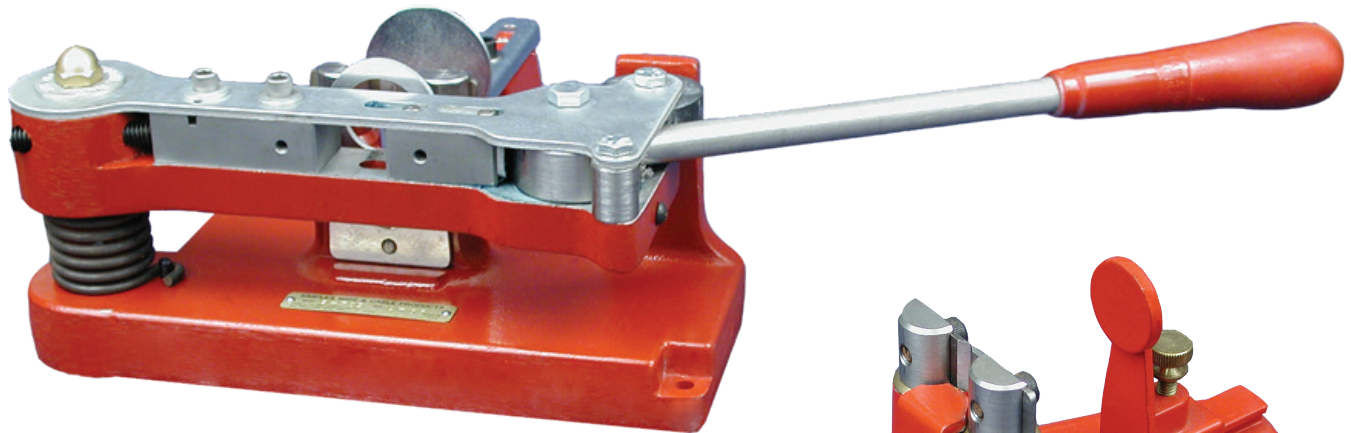
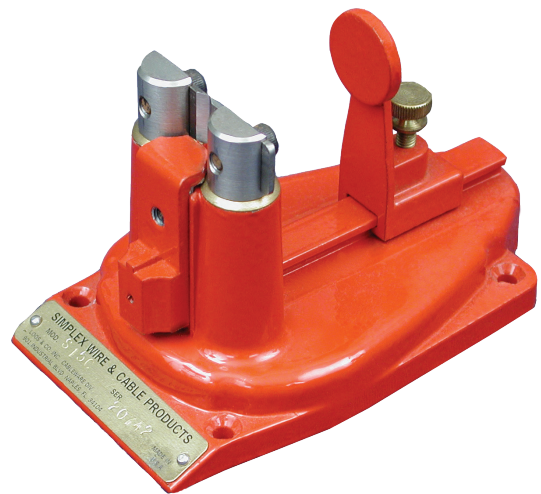


SIMPLEX

Wire and Cable Strippers and Cutters



Model S-30C



Model S-15

**Instructions and
Replacement Parts Lists**

LOOSE CO. INT.
CABLEWARE® DIVISION

Simplex Wire and Cable Stripper

Model
S-30C



Clean Cutting • Precision Stripping • Fast Working • Easy Operating

The Simplex Model S-30C will strip all types of Battery Cables and multiple conductor — metallic shielded, cambric or synthetic insulated wire and cable.

We recommend the use of grooved blades when removing outer insulation or shielding and particularly on single stranded wire where a clean stripped end is required.

Parallel wire, heater cord, twisted pair and ordinary single conductor cords are stripped with plain blades which are furnished with the stripper.

INSTRUCTIONS — S-30-C WIRE STRIPPER

Installation and set-up: Mount stripper securely on bench and screw handle furnished tightly into cam.

Guide bushing Installation: See Chart No. 2 for available sizes. To facilitate installing guide bushing a push button lock is provided to hold stripper arm open. Select proper guide bushing to clear outside diameter of wire and hold in place provided for same by means of spring retainer.

Blade Installation: After proper guide bushing is installed select and mount proper blades to suit wire to be stripped and lineup as follows:

Grooved blades: See Chart No. 3 for available sizes. Clamp grooved blades in position so that straight cutting edges touch and grooves are concentric with wire guide hole.

Plain blades: Clamp central with guide bushing and the proper distance apart to just clear the diameter of inner conductor being stripped. These blades can be used for parallel wire, heater cord and many single conductor wires.

Adjustment of gripping jaw: Loosen two top screws, locate gripping jaw so that serrated face is approximately one-half of the outside diameter of wire away from center line of guide bushing and tighten top screws. To avoid slippage, jaw must be backed up with set screw.

Wire stop: Set wire stop for proper stripping length. This stop is reversible to provide a 10" stripping length.

Operation: Hold wire in left hand and insert it through the clamping jaws and guide bushing up to the stop and a quick pull on the handle grips the wire and draws it through the oscillating stripping blades. Retain wire in left hand in same position it was at end of stripping stroke, then simultaneously release handle and pull wire away from machine, thus completing stripping operation.

Lubrication: Oil eccentric cam, movable jaw and stripper arm pivot with S.A.E. No. 10 oil.

IMPORTANT — DO NOT LUBRICATE OR USE ANY TYPE OF SOLVENT FOR CLEANING BLADE HOLDER JOURNALS.

CONSTRUCTION AND SPECIFICATIONS

Finish — Red or Black — all steel parts except blades are cadmium plated.

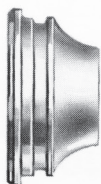
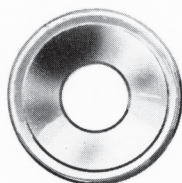
All wearing parts hardened.

Size 9" x 10", height 5". Shipping weight 20 lbs.

Maximum capacity $\frac{3}{4}$ " outside diameter of cable.

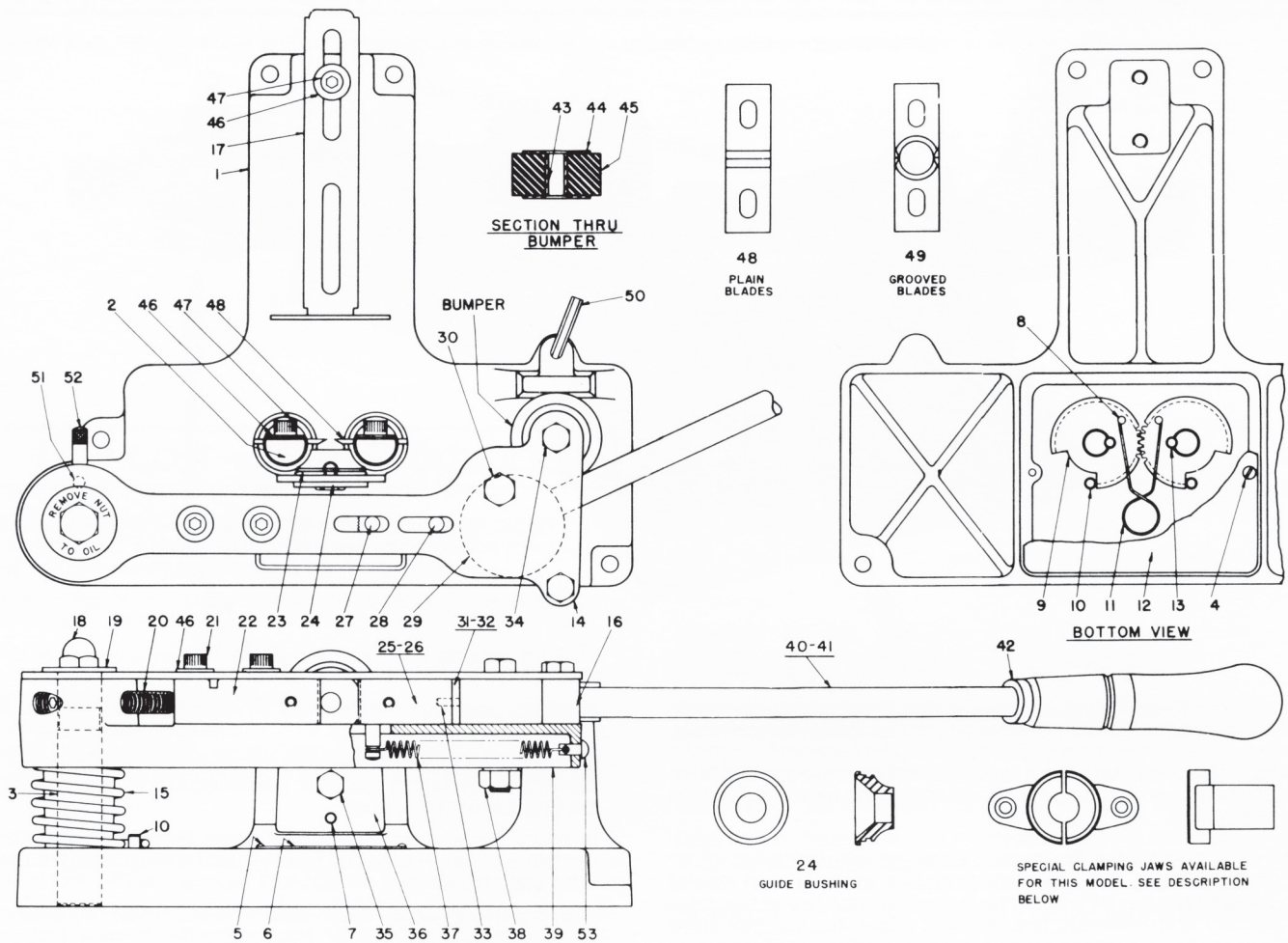
MODEL S-130

Same as **Model S-30C**, except with heavier construction and a maximum capacity of 1" outside diameter at cable.



The illustrations show the removable wire guide bushing and grooved blades which are available in various hole sizes to suit the wire or cable being stripped. Model S-30C — Bushing maximum hole diameter is .750" and blade maximum hole diameter is .563". Model S-130 — Blade maximum hole diameter is .812".





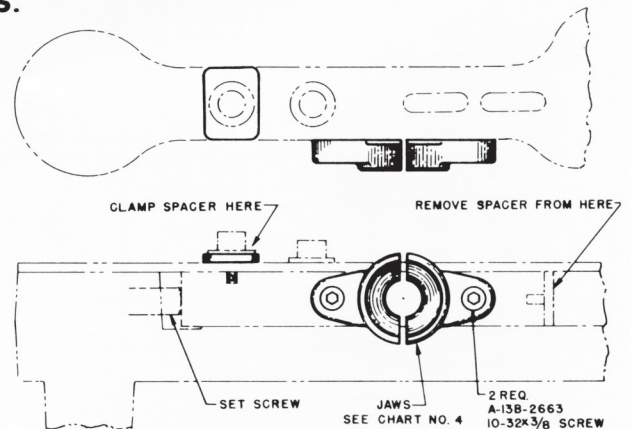
CLAMPING JAW ATTACHMENT FOR MODEL S-30C ONLY

This attachment is not furnished as standard equipment with the Model S-30C but must be ordered separately. See Chart No. 4 for available sizes of special jaws.

INSTRUCTIONS

To avoid crushing insulation on certain wires such as metallic shielded cable, synthetic, cambric or woven insulation cable, we have made provisions on this stripper for a special circular clamping jaw attachment.

When using these jaws, remove spacer between cam and movable jaw and clamp spacer under screw shown. Pins will locate adjustable jaw in proper position, but jaw must be backed up with set screw.



SIMPLEX WIRE STRIPPER MODEL S-30-C

CHART NO. 1

CHART NO. 2

CHART NO. 3

PART LIST				GUIDE BUSHINGS AVAIL.		GROOVED BLADES AVAILABLE							
ITEM NO.	NO. REQD.	PART NO.	DESCRIPTION	HOLE SIZE	PART NO.	HOLE SIZE	PART NO.	IDENT. MARK	FOR A.W.G. WIRE NO.	HOLE SIZE	PART NO.	IDENT. MARK	FOR A.W.G. WIRE NO.
1	1		Base Casting Assembly Inc. items 1-13 incl.	.063	B-5C-3242	.031	A-8B-2002		20	.500	A-8B-2062		
1	1	D-1B-3234	Base	.078	B-5C-3243	.039	A-8B-2003		18 & 19	.508	A-8B-2063		
2	2	A-5B-3235	Blade Holder	.094	B-5C-3244	.047	A-8B-2004		17	.516	A-8B-2064		
3	1	A-5B-5221	Pivot Stud	.109	B-5C-3245	.055	A-8B-2005		16	.523	A-8B-2065		
4	2	A-17B-5189	Screw #4-40 X 1/2 (Shakeproof Type 1)	.125	B-5C-3246	.063	A-8B-2006	A	15	.531	A-8B-2066		
5	2	A-17A-2367	P.K. Drive Screws #0 X 3/16	.141	B-5C-3247	.070	A-8B-2007		14	.539	A-8B-2067		
6	1	A-19A-3208	Name Plate	.156	B-5C-3248	.078	A-8B-2008	B	13	.547	A-8B-2068		
7	2	A-5B-3241	Plain Straight Pin	.172	B-5C-3249	.086	A-8B-2009		12	.554	A-8B-2069		
8	2	A-17A-2368	P.K. Drive Screw #0 X 1/2	.188	B-5C-3250	.094	A-8B-2010	C	11	.563	A-8B-2070		
9	2	A-5A-3236	Spur Gear	.203	B-5C-3251	.101	A-8B-2011		10				
10	3	A-5B-3238	Pin	.219	B-5C-3252	.109	A-8B-2012	D	10				
11	1	A-7C-3239	Torsion Spring	.234	B-5C-3253	.116	A-8B-2013		9				
12	1	A-4B-3293	Bottom Plate	.250	B-5C-3254	.125	A-8B-2014	E	9				
13	2	A-5B-3237	Pin (Shaft to Gear)	.266	B-5C-3255	.136	A-8B-2015		8				
				.281	B-5C-3256	.141	A-8B-2016	F	8	.188	B-2C-5222		
				.297	B-5C-3257	.147	A-8B-2017		7	.219	B-2C-5223		
14	1	B-4B-4620	Top Plate	.297	B-5C-3257	.147	A-8B-2017		7	.250	B-2C-5224		
15	1	A-7C-3204	Torsion Spring	.313	B-5C-3258	.156	A-8B-2018	G	7	.281	B-2C-5225		
16	1	A-5C-3228	Spacer	.328	B-5C-3259	.166	A-8B-2019		6	.313	B-2C-5226		
17	1	B-4C-3206	Stop Bracket	.344	B-5C-3260	.172	A-8B-2020	H	6	.344	B-2C-5227		
18	1	A-15C-2293	Hex Cap Nut 3/8-16	.359	B-5C-3261	.180	A-8B-2021		5	.375	B-2C-5228		
19	1	A-4E-3205	Washer	.375	B-5C-3262	.188	A-8B-2022	I	5	.406	B-2C-5229		
20	1	A-12A-3093	Set Screw 3/8-16 X 2 Hollow Hex	.391	B-5C-3263	.196	A-8B-2023		5	.438	B-2C-5230		
21	2	A-13B-2780	Knurled Cap Screw 1/2-20 X 1 1/2	.406	B-5C-3264	.203	A-8B-2024	J	5	.469	B-2C-5231		
22	1	A-6A-4622	Adjustable Jaw	.422	B-5C-3265	.213	A-8B-2025		4	.500	B-2C-5232		
23	1	A-7C-3292	Retainer Spring	.438	B-5C-3266	.219	A-8B-2026	K	4	.531	B-2C-5233		
24	1	See Chart	Guide Bushing	.453	B-5C-3267	.228	A-8B-2027		3	.563	B-2C-5234		
25	1	A-SA-4623	Moveable Jaw Assembly includes	.469	B-5C-3268	.234	A-8B-2028	L	3	.594	B-2C-5235		
26	1	A-6A-4621	Moveable Jaw	.484	B-5C-3269	.242	A-8B-2029		3	.625	B-2C-5236		
27	1	A-5B-3194	Spring Pin	.500	B-5C-3270	.250	A-8B-2030	M	3	.656	B-2C-5237		
28	1	A-5B-3195	Knurled Pin	.516	B-5C-3271	.257	A-8B-2031		2	.688	B-2C-5238		
				.531	B-5C-3272	.266	A-8B-2032	N	2				
29	1	A-5C-3227	Eccentric Cam	.547	B-5C-3273	.272	A-8B-2033		2				
30	1	A-13A-5271	Hex Hd. Screw 5/16-18 X 2	.563	B-5C-3274	.281	A-8B-2034	O	2				
31	1	A-SA-4626	Spacer Assembly Inc. items 31-33 incl.	.578	B-5C-3275	.290	A-8B-2035		1				
32	1	A-4B-4624	Spacer	.594	B-5C-3276	.297	A-8B-2036	P	1				
33	2	A-5B-4625	Dowel Pin	.609	B-5C-3277	.302	A-8B-2037		1				
				.625	B-5C-3278	.313	A-8B-2038	Q	1				
34	2	A-13A-2559	Hex Hd. Screw 1/2-20 X 1 1/2	.641	B-5C-3279	.323	A-8B-2039		0				
35	1	A-13B-2553	Hex Hd. Cap Screw 1/2-20 X 1 1/2	.656	B-5C-3280	.328	A-8B-2040	R	0				
36	1	A-4B-3240	Guide Bushing Plate	.672	B-5C-3281	.332	A-8B-2041		0				
37	1	A-7A-3233	Extension Spring	.688	B-5C-3282	.344	A-8B-2042	S	0				
38	1	A-15A-2172	Hex Nut Full 5/16-18	.703	B-5C-3283	.348	A-8B-2043		0				
39	1	C-1C-3197	Stripper Arm Casting	.719	B-5C-3284	.359	A-8B-2044	T	0				
40	1	B-SA-3210	Lever Bar Assembly Inc. items 40-42 incl.	.734	B-5C-3285	.368	A-8B-2045		00				
41	1	A-5B-3192	Lever Bar	.750	B-5C-3286	.375	A-8B-2046	U	00				
42	1	A-20B-3191	Handle			.383	A-8B-2047		00				
						.391	A-8B-2048	V	00				
43	1	A-5C-3229	Spacer			.397	A-8B-2049		00				
44	2	A-4E-3231	Washer			.406	A-8B-2050	W	00				
45	1	A-22A-3230	Rubber Bumper			.413	A-8B-2051		000				
46	5	A-4E-3207	Washer			.422	A-8B-2052	X	000				
47	3	A-13B-2774	Knurled Cap Screw 1/2-20 X 1 1/2			.429	A-8B-2053		000				
48	1 set	A-8B-2001	Blade (Plain)			.438	A-8B-2054	Y	000				
49	1 set	See chart	Blade (Grooved)			.445	A-8B-2055		000				
50	1	A-9A-3217	Allen Wrench 3/16 Hex.			.453	A-8B-2056	Z	000				
51	1	A-5B-4726	Pin			.461	A-8B-2057		0000				
52	1	A-5B-4725	Push Button Pin			.469	A-8B-2058		0000				
53	1	A-16A-3294	Spring Pin			.477	A-8B-2059						
						.484	A-8B-2060						
						.492	A-8B-2061						

CHART NO. 4

CLAMPING JAWS	
HOLE SIZE	PART NO.
.188	B-2C-5222
.219	B-2C-5223
.250	B-2C-5224
.281	B-2C-5225
.313	B-2C-5226
.344	B-2C-5227
.375	B-2C-5228
.406	B-2C-5229
.438	B-2C-5230
.469	B-2C-5231
.500	B-2C-5232
.531	B-2C-5233
.563	B-2C-5234
.594	B-2C-5235
.625	B-2C-5236
.656	B-2C-5237
.688	B-2C-5238

NOTE

THESE NOTES APPLY TO ALL STRIPPERS SHOWN IN THIS BULLETIN.

All blades are mounted with bevel side toward operator.

Ident. mark column is used for cross reference to old part number only. Use new part number when ordering.

The A.W.G. wire sizes on blade charts are based on solid wire.

Assemblies shown in part lists should be purchased as such and not by individual parts.

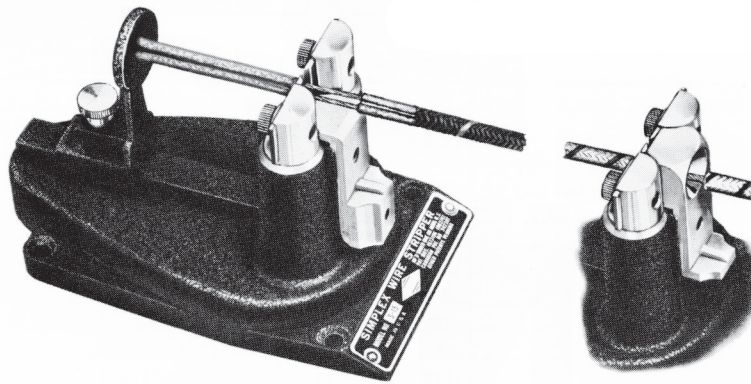
Send wire samples for proper selection of grooved blades.

This attachment is not furnished as standard equipment with the model S-30-C but must be ordered separately.

Cable Hardware and Tools Technology, Inc. Engineers are ready and able to serve you as they have served our many thousands of customers in the past 25 years.

Simplex Wire Stripper

Model
S-15



Low Cost • High Production • Easy Operating • Rapid Set-Up

The Simplex Model S-15 is a sturdy inexpensive high production wire stripper for smaller size cables and wires which has saved money for thousands of our satisfied customers.

No wire stripper on the market can duplicate the low cost performance of the Model S-15.

This stripper is of sturdy Die Cast construction designed and built to give years of trouble free service and employs the time proven patented oscillating blade principle.

This stripper will accommodate wire and cable up to 7/16 outside diameter and is indispensable for stripping parallel wire and heater cord which is accomplished with plain blades supplied with the stripper.

INSTRUCTIONS

Installation: Mount stripper securely on bench.

Wire guide installation: See Chart No. 7 for available sizes. Wire guide with plain shelf end is used with plain blades and bell mouthed end must be used with grooved blades. Select proper

wire guide to clear outside diameter of wire.

Blade installation: After proper wire guide is installed select and mount proper blades to suit wire that is to be stripped, and lineup as follows:

Grooved blades: See Chart No. 6 for Available Sizes. Clamp grooved blades in position so that straight cutting edges touch and grooves are concentric with wire guide hole.

Plain blades: Clamp central with wire guide and the proper distance apart to just clear the diameter of inner conductor being stripped. These blades can be used for parallel wire, heater cord and many single conductor wires.

Wire stop: Set wire stop for proper stripping length.

Operation: Insert the wire through the wire guide up to the stop and a quick pull on wire draws it through the oscillating stripping blades neatly removing the insulation.

IMPORTANT — DO NOT LUBRICATE OR USE ANY TYPE OF SOLVENT FOR CLEANING BLADE HOLDER JOURNALS.

CHART NO. 5

CHART NO. 6

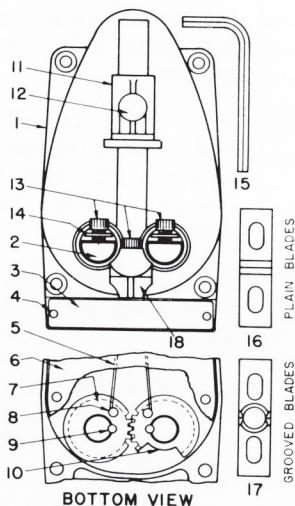
CHART NO. 7

SEE CHART NO. 5

PARTS LIST

GROOVED BLADES AVAILABLE

WIRE GUIDES



ITEM NO.	NO. REQ'D.	PART NO.	DESCRIPTION	HOLE SIZE	PART NO.	IDENT. MARK	FOR A.W.G. WIRE NO.	HOLE SIZE	PART NO.
1	1	C-2B-3295	Stripper Base Includes Items 1-10	.027	A-8A-2091	19	21 & 22		
2	2	A-5B-3296	Blade Holder	.035	A-8A-2092	18	19 & 20	.063	B-2C-3307
3	1	A-19A-3305	Name Plate	.040	A-8A-2093	17	18		
4	7	A-17A-2367	P.K. Drive Screws #0 X 3/16	.047	A-8A-2094	16	17	.078	B-2C-3308
5	1	A-7C-3239	Torsion Spring	.054	A-8A-2095		16		
6	1	A-4B-3302	Bottom Plate	.063	A-8A-2096	12	14 & 15	.094	B-2C-3309
7	1	A-5A-3297	Spur Gear - Plain	.070	A-8A-2097		14		
8	2	A-17A-2368	P.K. Drive Screws #0 X 1/8	.078	A-8A-2098	11	13	.109	B-2C-3310
9	2	A-5B-3299	Pin	.082	A-8A-2099	15	12		
10	1	A-5A-3298	Spur Gear - Milled	.088	A-8A-2100		12	.125	B-2C-3311
11	1	A-2C-3303	Adjustable Stop	.094	A-8A-2101	13	11		
12	1	A-35B-3304	Stop Screw	.101	A-8A-2102	14	10	.141	B-2C-3312
13	3	A-13B-2663	Knurled Screw #10-32 X 3/8	.109	A-8A-2103	10	10		
14	2	A-4E-3301	Washer	.116	A-8A-2104		9	.156	B-2C-3313
15	1	A-9A-3216	Allen wrench 5/32 Hex	.125	A-8A-2105	5	9		
16	1 set	A-8A-2090	Blade (Plain)	.136	A-8A-2106		8	.172	B-2C-3314
17	1 set	See Chart	Blade (Grooved)	.141	A-8A-2107	9	8	.188	B-2C-3315
				.147	A-8A-2108		7	.203	B-2C-3316
				.154	A-8A-2109	4	7		
				.161	A-8A-2110		6	.203	B-2C-3316
				.172	A-8A-2111	00	6		
				.180	A-8A-2112		5	.219	B-2C-3317
				.188	A-8A-2113	0	5		
				.196	A-8A-2114		5	.234	B-2C-3318
				.203	A-8A-2115	8	5		
				.209	A-8A-2116		4	.250	B-2C-3319
				.219	A-8A-2117	7	4		
				.228	A-8A-2118		3	.266	B-2C-3320
				.234	A-8A-2119	6	3		
				.242	A-8A-2120		3	.281	B-2C-3321
				.250	A-8A-2121	3	3		
				.257	A-8A-2122		2	.297	B-2C-3322
				.266	A-8A-2123	2	2		
				.272	A-8A-2124		2	.313	B-2C-3323
				.281	A-8A-2125	1	2		
				.290	A-8A-2126		1	.328	B-2C-3324
				.297	A-8A-2127		1		
				.302	A-8A-2128		1	.344	B-2C-3325
				.313	A-8A-2129		1		
				.320	A-8A-2130			.359	B-2C-3326
				.328	A-8A-2131		0		
				.335	A-8A-2132		0	.375	B-2C-3327
				.344	A-8A-2133		0		
				.351	A-8A-2134		0		
				.359	A-8A-2135		0		
				.367	A-8A-2136		00		
				.375	A-8A-2137		00		

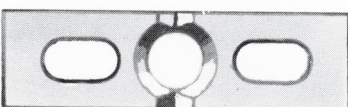
CONSTRUCTION AND SPECIFICATIONS

Finish — Red or Green — all steel parts except blades, cadmium plated.

Castings — High strength Die Cast, Zinc Alloy. Maximum Capacity 7/16 outside diameter of wire.

Size 2 3/4" x 5", height 3". Shipping weight approximately 2 lbs.

These illustrations show the removable and reversible wire guide and grooved blades which are available in various hole sizes to suit the wire being stripped. Wire guide maximum hole diameter is .375" and blade maximum hole diameter is .375".





901 INDUSTRIAL BOULEVARD | NAPLES, FLORIDA 34104 | USA
PHONE: (800) 321-LOOS (5667) | (239) 643-5667 | FAX: (239) 643-4558
EMAIL: INFO@LOOSNAPLES.COM | WEB: WWW.LOOSNAPLES.COM

INST-03
Rev. 12/28/16