

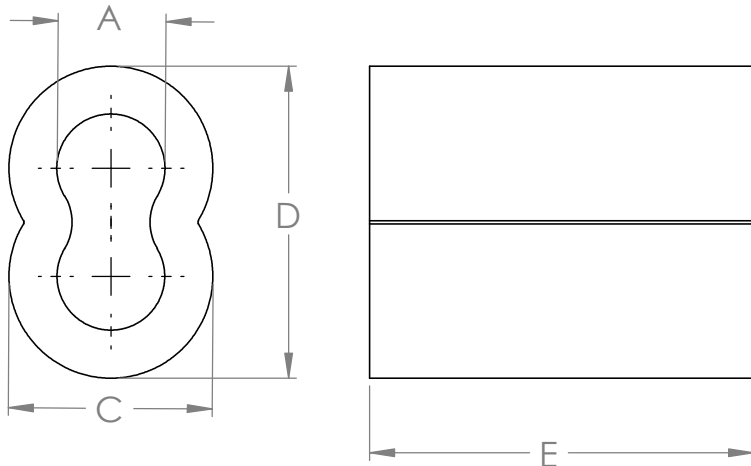
2

1

REVISIONS				
ZONE	REV.	DESCRIPTION	DATE	APPROVED
	B	Ref. for catalog	4/11/19	DEP

B

B



Cableware P/N	Wire Size	A (Ref.)	C (Ref.)	D (Ref.)	E (Ref.)
SL1-1.5	3/64	0.073	0.140	.207	3/8
SL1-2	1/16	0.092	0.176	.257	3/8
SL1-3	3/32	0.121	0.248	.381	1/2
SL1-4	1/8	0.161	0.334	.490	5/8
SL1-5	5/32	0.192	0.365	.552	11/16
SL1-6	3/16	0.223	0.427	.646	1
SL1-7	7/32	0.255	0.490	.740	1-1/16
SL1-8	1/4	0.286	0.551	.832	1-1/8
SL1-9	9/32	0.317	0.568	.881	1-3/16
SL1-10	5/16	0.380	0.677	1.021	1-1/4
SL1-12	3/8	0.442	0.756	1.162	1-7/16
SL1-14	7/16	0.505	0.943	1.443	1-11/16
SL1-16	1/2	0.567	1.068	1.631	2

A

A

UNLESS OTHERWISE SPECIFIED:	NAME	DATE
DIMENSIONS ARE IN INCHES TOLERANCES: FRACTIONAL ± 015 ANGULAR: ± 3° TWO PLACE DECIMAL ± 010 THREE PLACE DECIMAL ± 005 INTERPRET GEOMETRIC TOLERANCING PER: ASTM Y14.5M	DRAWN	YD 4/11/19
	CHECKED	BG 4/11/19
	ENG APPR.	DEP 4/11/19
MATERIAL 6063 Alum. Alloy	COMMENTS:	
FINISH NA	DO NOT SCALE DRAWING	

PROPRIETARY AND CONFIDENTIAL
THE INFORMATION CONTAINED IN THIS DRAWING IS THE SOLE PROPERTY OF LOOS & CO. INC. ANY REPRODUCTION IN PART OR AS A WHOLE WITHOUT THE WRITTEN PERMISSION OF LOOS & CO. INC. IS PROHIBITED.

TITLE: **LOOS & CO.**
CABLEWARE® DIVISION

Commercial Aluminum Oval Sleeves

SIZE	DWG. NO.	REV
A	SL1-CATALOG	B
SCALE: 1:1		

2

1